

**FINDEISEN**  
nadelvlies



Quality Made in Germany



FINDEISEN needed  
carpets – tradition and future

## History & Philosophy

### Pioneers in needled carpets

FINDEISEN is one of the pioneers who, in the second half of the last century, started on a then new technique to manufacture moderately priced and highly robust textile floorings that, in contrast to woven carpets, are produced using the so-called needling technique. Accordingly, these floorings are called needled carpets. Due to their resiliency and their versatile wear layer these needled carpets were ideally suited for use in commercial areas.

### Pursuit of quality optimization

Our working approach is always focusing on quality optimization. That means: Research and development of existing and new products has top priority in our quality standards. A creative team of developers and a highly qualified staff plus an ultra-modern own test centre guarantee that, also in future, innovative, top quality concepts and ideas can be realized by FINDEISEN.





Collections

# Aesthetic himmel und erde

himmel und erde – Forest, meadow, and a glance into the sky

Mossy meadow or clouds drifting by, these and a lot more interpretations suggest themselves by the range of colours of the fine-fibre FEINWERK himmel und erde quality. Softness and surface harmony come from the felt-like looks and the foot-friendly haptic. Naturally, the carpet is delivered with all sustainability certificates from the CRI-Green Label plus (LEED) to the Blue Angel, the DGNB and GuT memberships.



403510 403507 403504 403503 403502 403501 403505 403506 403508 403509

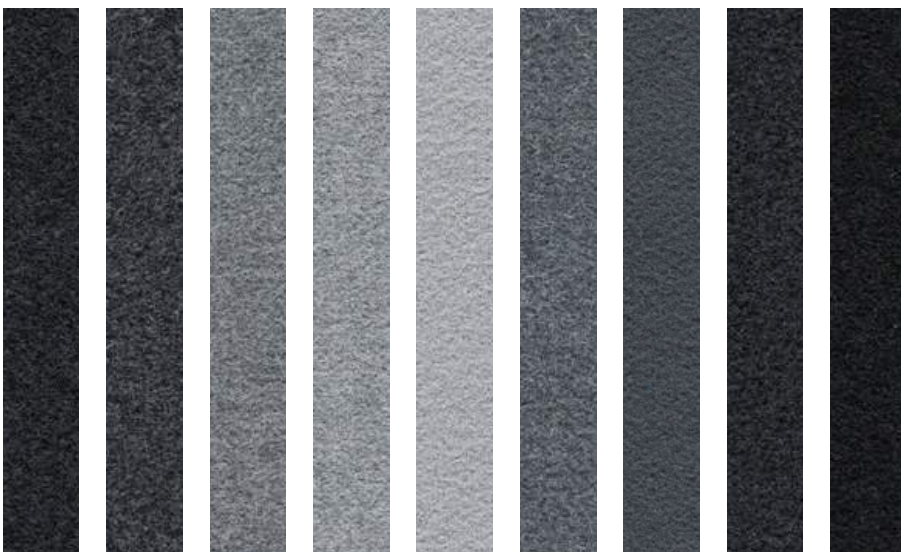
## FEINWERK himmel und erde



403516 403513 403511 403512 403514 403515 603508 603506 603507 603509 603510 603511



503512 503511 503508 503503 503501 503502 503509 703507 703506 703505 703508 703509

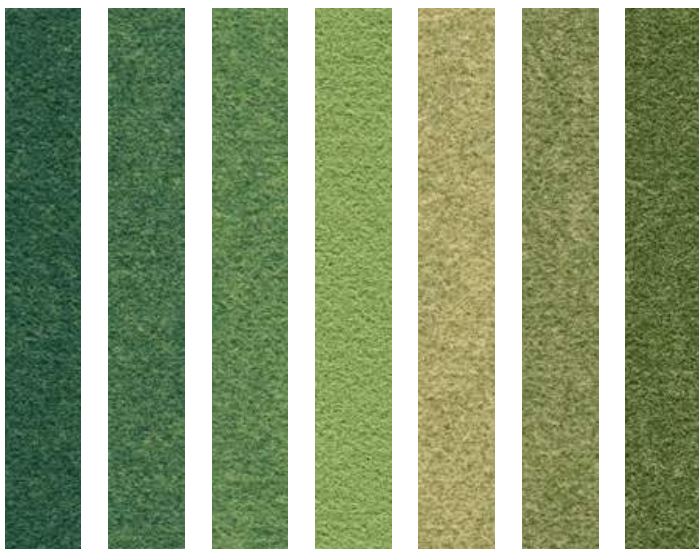


803507 803506 803503 803502 803501 803504 803505 803508 803509

# Aesthetic buntes treiben

buntes treiben – Needled material in a fantastic colour play

Come and see: A classic carpet presents itself in a new haptic look. With the new fine-fibre FEINWERK buntes Treiben quality there is no longer any excuse for not using needled material: the felt-like appearance presents itself with a pleasant haptic. Naturally, the carpet is delivered with all sustainability certificates from the CRI-Green Label plus (LEED) to the Blue Angel, the DGNB and GuT memberships.

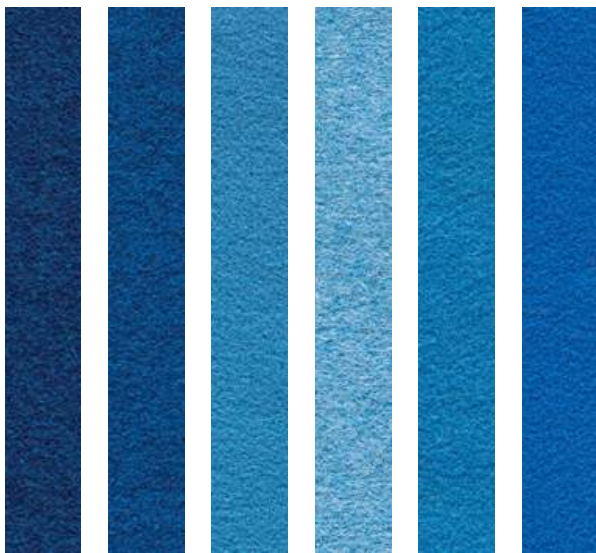


603507 603506 603504 603502 603501 603503 603505

FEINWERK buntres treiben



753510 753509 753508 753507 753506 753501 753502 753503 753504 753505



703506 703505 703503 703501 703502 703504



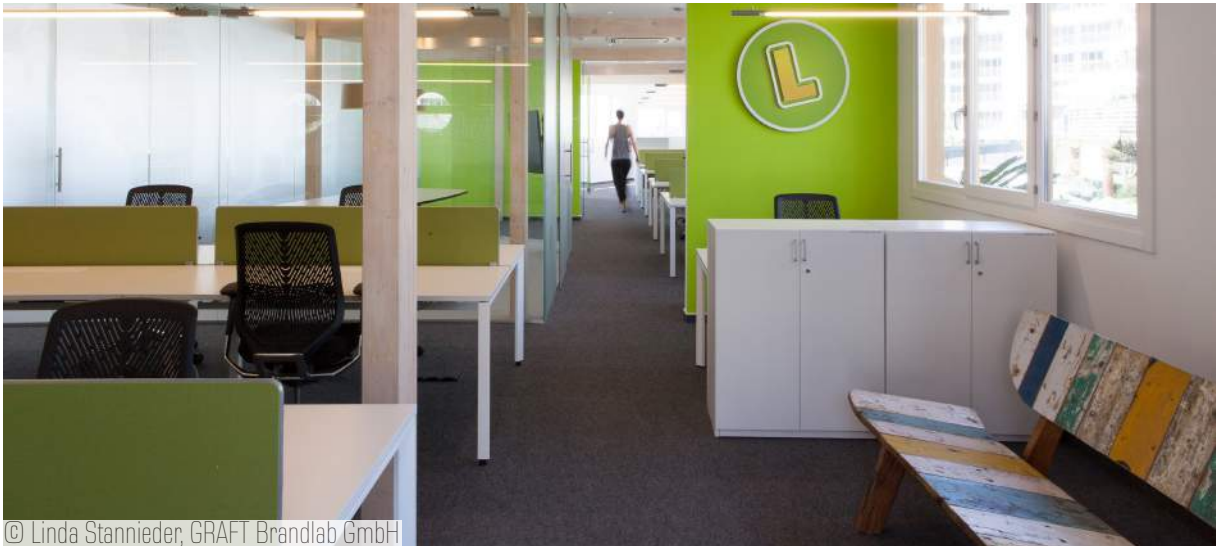
503510 503507 503505 503513 503514 503504 503506



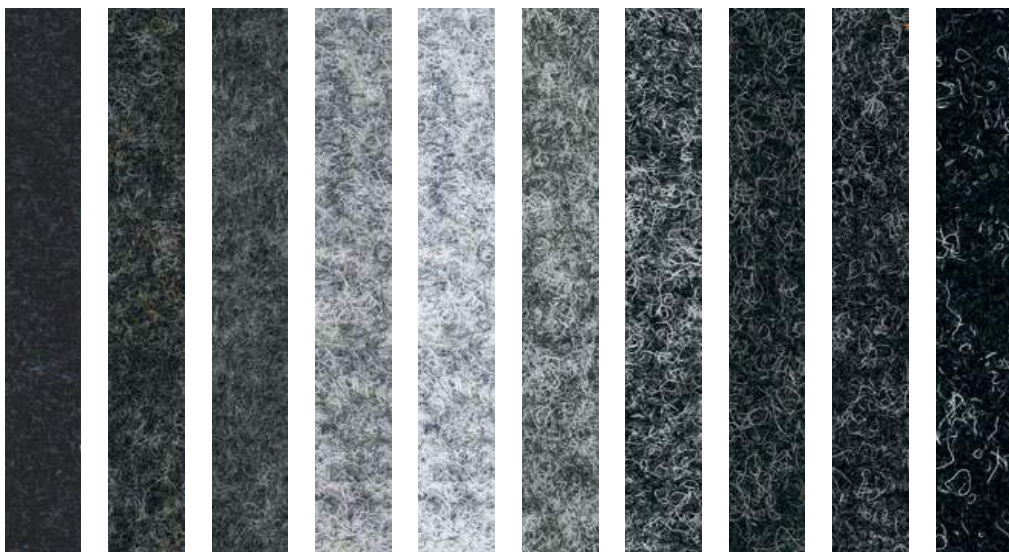
# Aesthetic color

color - everything but grey

60 fresh, vivid colours mark the beginning of the abundance of colours of the FINETT VISION color needed carpet quality. You will get all excited about the matching blue, green, sandy brown, red and grey colour ranges. What for instance is your dynamic grey?

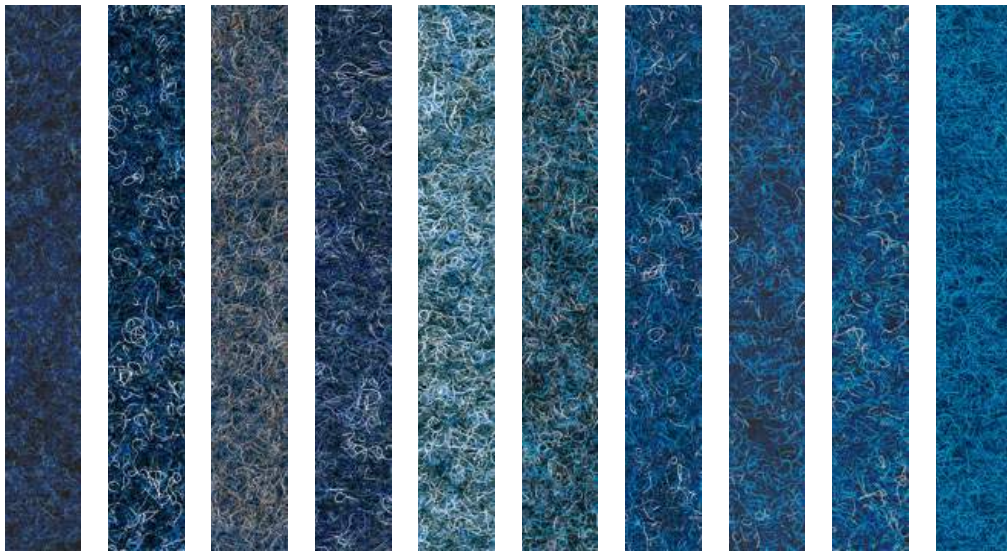


© Linda Stannieder, GRAFT Brandlab GmbH

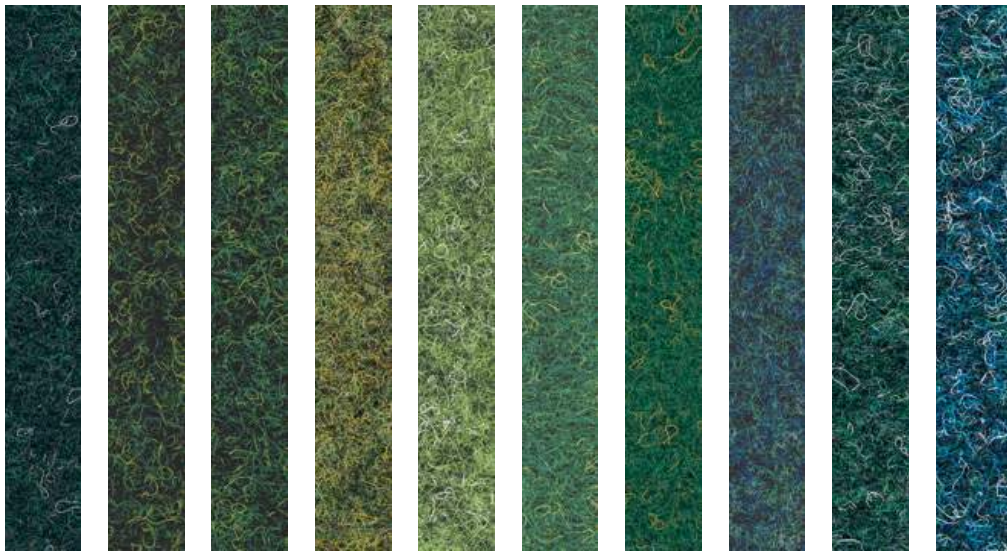


800146 800155 800145 800142 800141 800143 800144 800159 800158 980147

VISION color



700107 700101 700110 700105 700102 700103 700106 700108 700104 700109

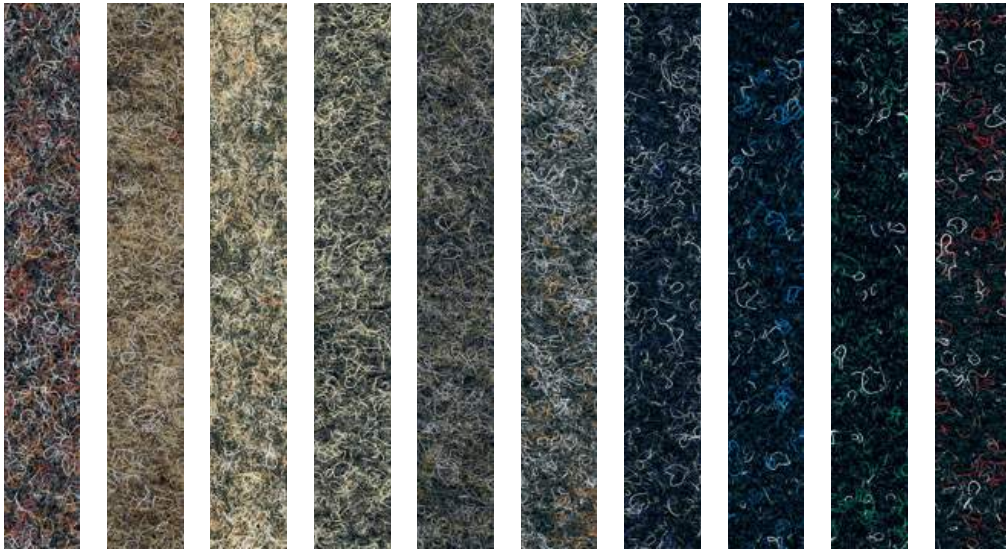


600117 600116 600115 600111 600112 600113 600114 600119 600118 600120



400130 400127 200124 100123 100122 100121 400126 400125 400128 400129

VISION color



800157 800151 800152 800153 800154 800156 800160 980148 980149 980150



500135 500133 400132 400131 500134 500136 500137 500138 500140 500139



© Rytina Bürosysteme

# Aesthetic color neue Farben

FINETT VISION color neue Farben – top quality needled carpets in clear new colours

Following the example of the FINETT VISION color quality we present to you FINDEISEN's colourful program of needled carpets. Stylish colour varieties enable even more attractive floor designs. And not to forget the excellent technical features! What usually is routine, with these brilliant colours it is great art. Such pure colours can only be produced by an experienced staff and in exactly defined workflows.



980173 800171 800172 750161 750163 500135 500164 400167

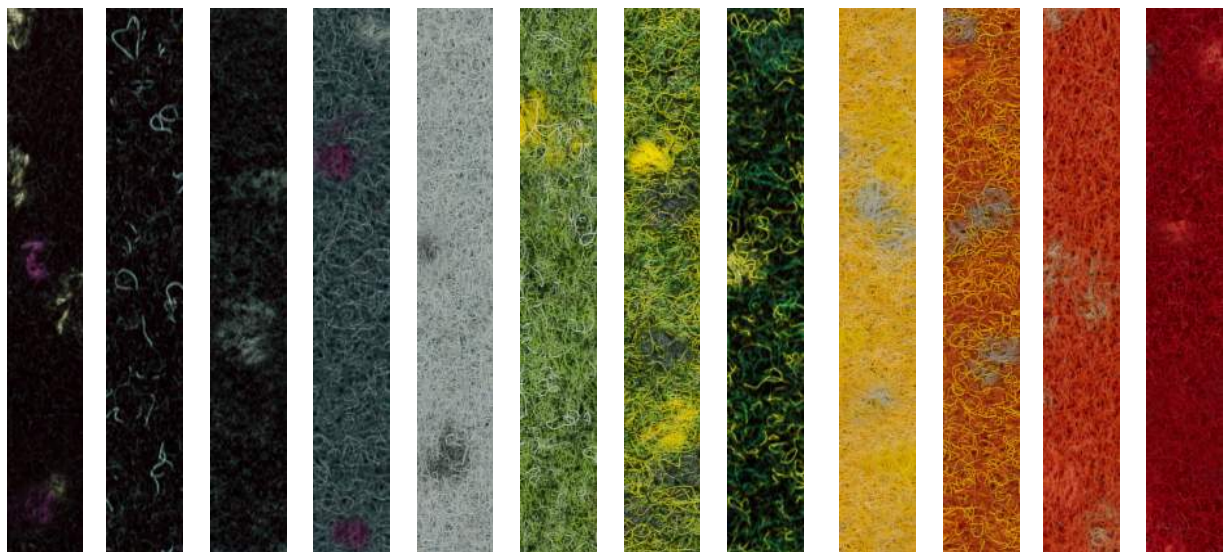


400175 700162 700109 700170 600169 600168 500165 200174

# Aesthetic focus

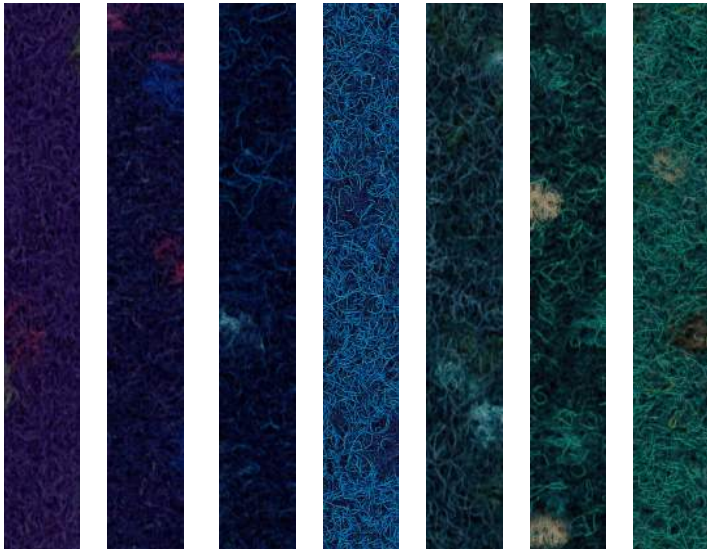
focus – to the point

A point or dot is the smallest design element. Though very small, it plays an important part in many fields. In writing and speech, a point or full stop defines and sets an end. Standing alone it is well-balanced. By multiplying it one creates spaces, intermediate spaces, indoor and outdoor spaces.

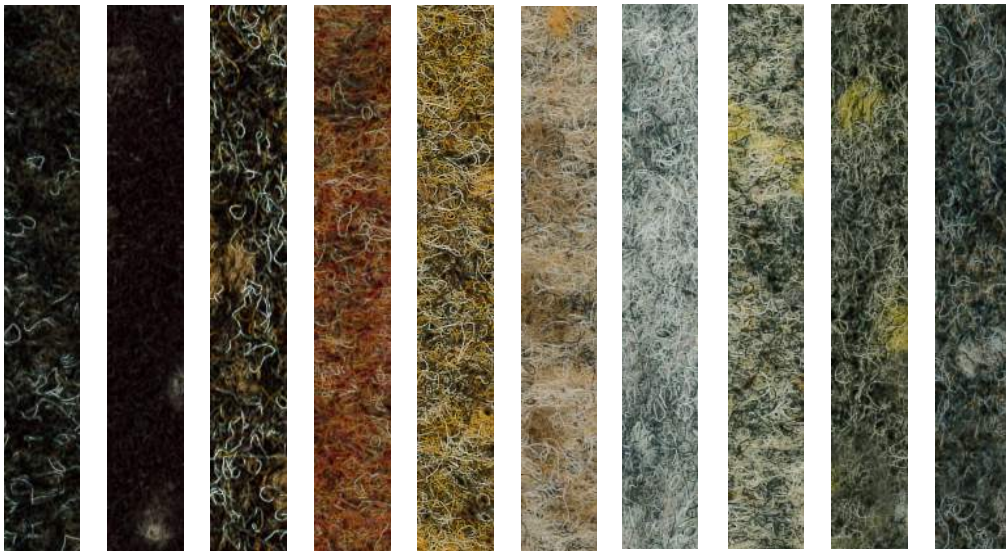


985573 985547 805546 805572 805572 605512 605511 605516 205574 505565 505564 505535

VISION focus



755561 755563 705562 705509 705570 605569 605568



405575 405567 405528 405532 105523 105522 805542 805552 805553 805554



# Ecological SOLID green

Ecological, sustainable, green

The first needled carpet ever worldwide that is mainly made of natural or recycled raw materials. The solution: The wear layer is made of fibres which are to 64% based on castor oil and the backing is entirely made of recycling fibres. This joint development of FINDEISEN and the Radici company was already honoured with several awards (i. a. AIT, materialPREIS 2013).

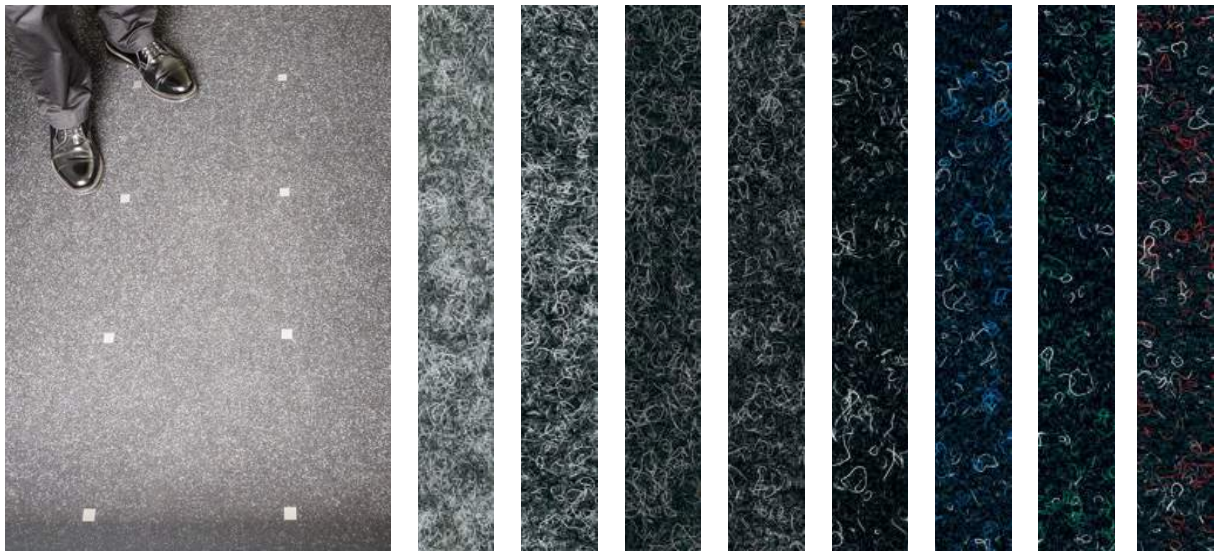


9823 8823 9023 8423 4623 8623 1423 6423 7023 7623 9223 7823

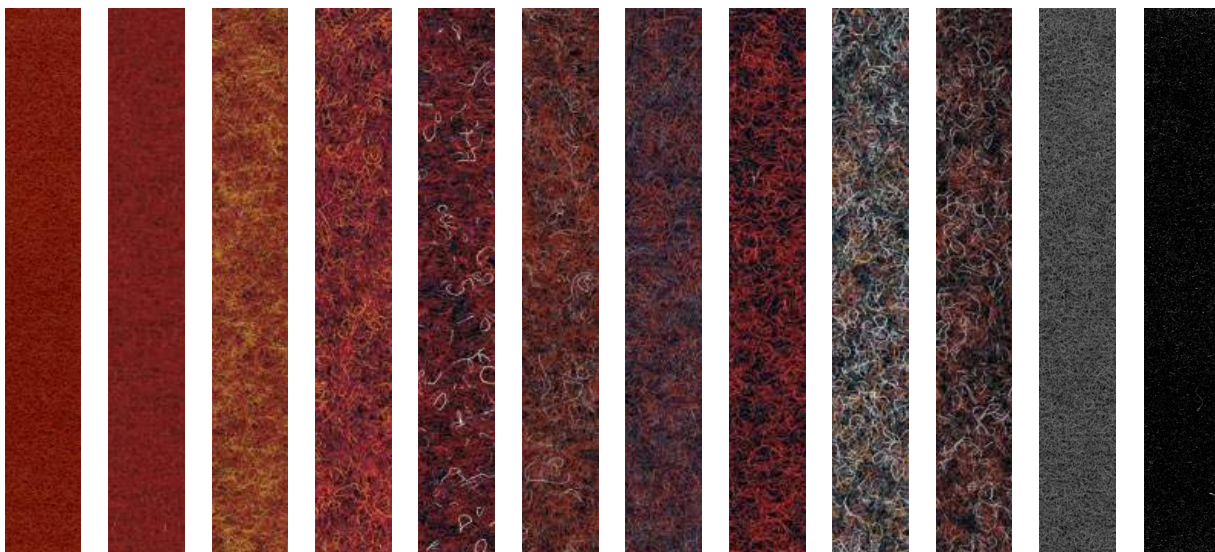
# Individual FINETT VISION metal

Polished up – surprising metal-look

Small metal applications ensure that certain something. Depending on the incoming light the squares outshine each other. Its particularly aesthetic look makes FINETT VISION a favourite in retail areas and open spaces.

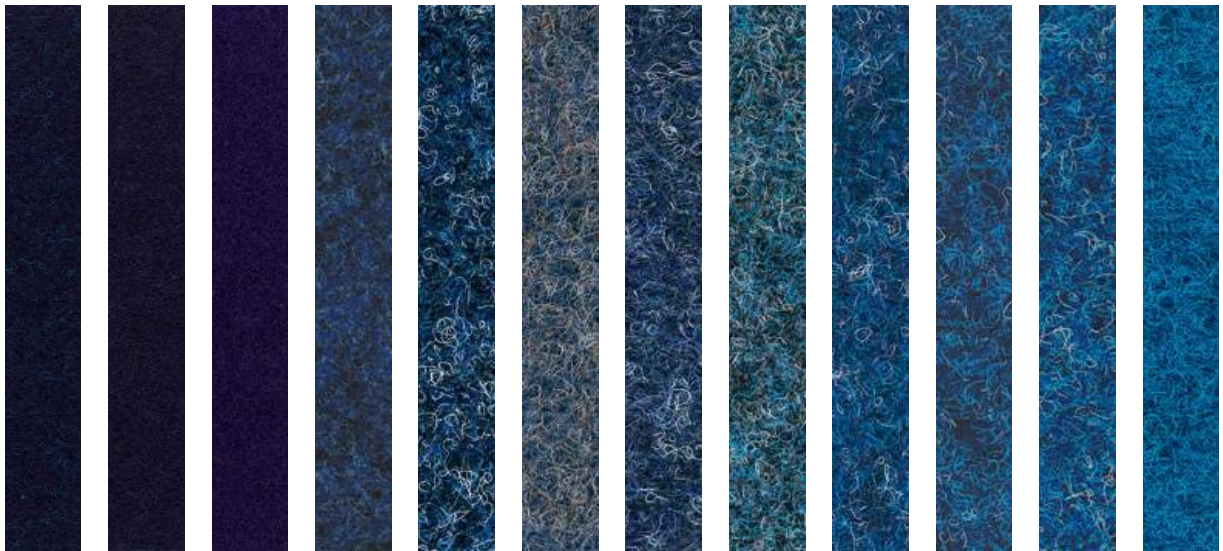


800143 800144 800159 800158 980147 980148 980149 980150

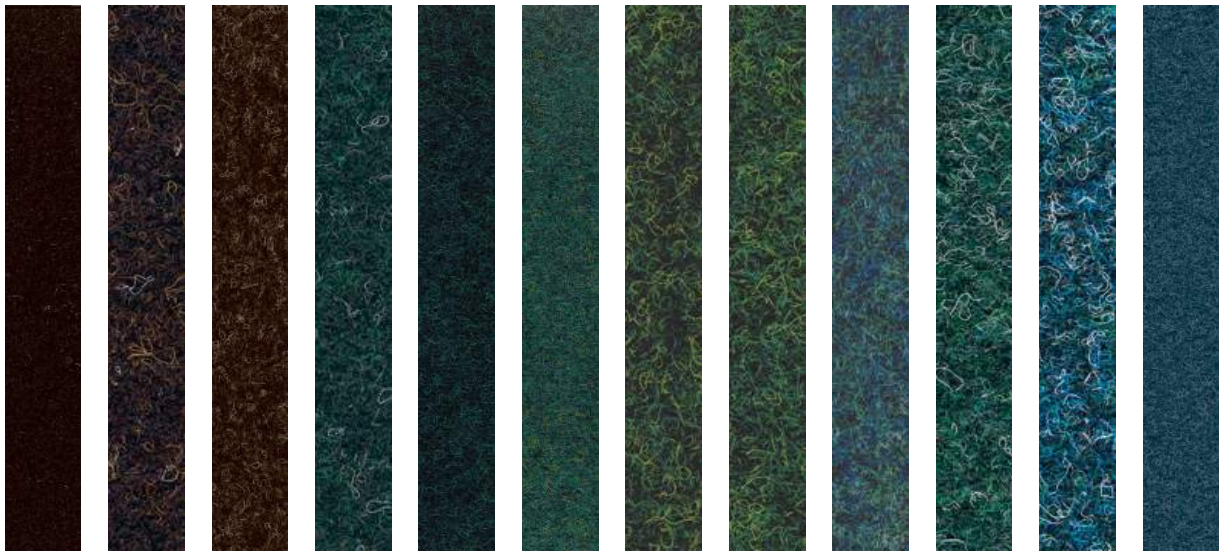


500164 500135 500133 500134 500137 500139 500140 500136 800157 500138 800171 980173

FINETT VISION metal



700162 750163 750161 700107 700101 700110 700105 700103 700106 700108 700104 700109



400167 400130 400175 600117 600169 600168 600116 600115 600119 600118 600120 700170



800160 800146 800155 400129 400128 800154 800156 400127 400126 800153 400125 200124

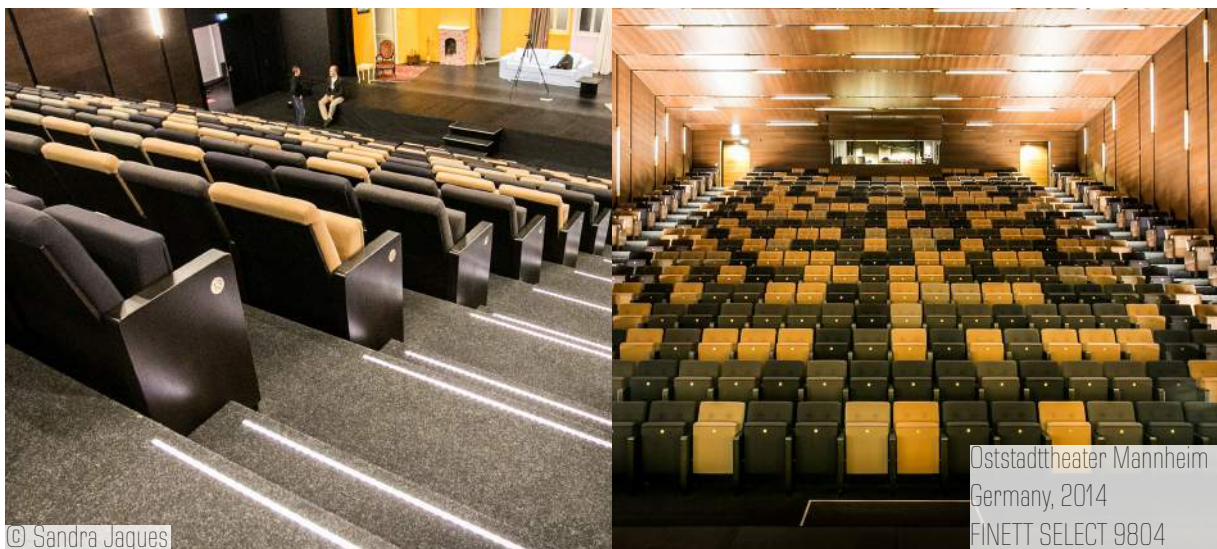


# References

# References

From Ettlingen into the World

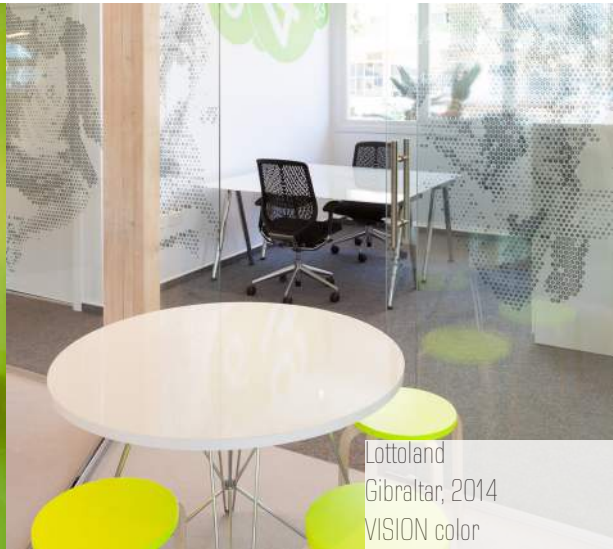
In the course of the years, we realized numerous projects in offices, shops, hotels, schools, airports and administration areas – please have a look ...



# References - international



© Linda Stannieder, GRAFT Brandlab GmbH



Lottoland  
Gibraltar, 2014  
VISION color



Mercedes-Benz Plaza  
Russia, 2004  
GT 2000



Baugeist  
China, 2015  
FINETT 8

## Awards



German Design Award  
Nominee 2016

**FINETT FEINWERK**



German Design Award  
Nominee 2015

**FINETT FEINWERK**

German Design Award  
Winner 2015

**SOLID green**



reddot award 2015  
honourable mention

reddot award 2015  
Winner 2015

**FINETT FEINWERK**



**MaterialPREIS**2013

Materialpreis 2013

**FINETT SOLID green**



Award for sustainability

**FINETT SOLID green**



Special award  
**FINETT FEINWERK**



FINDEISEN GmbH

Bulacher Straße 53  
76275 Ettlingen

Tel. +49 7243 7100-0  
Fax +49 7243 12760

Internet: [www.nadelvlies.de](http://www.nadelvlies.de)  
E-Mail: [info@nadelvlies.de](mailto:info@nadelvlies.de)